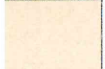
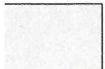
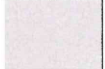
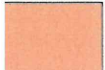




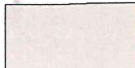



-  Commerciale
  -  Pubblici esercizi e/o ristorazione
  -  Terziario/servizi alla persona
  -  Collegamenti verticali e orizzontali
  -  Aree tecnologiche
  -  Terrazzi pedonali
  -  Giardino pensile
  -  Tetto verde
-  Parcheggio multipiano
  -  Accesso pedonale

**di Lottizzazione Sovracomunale.**  
 Nuovo insediamento Commerciale lungo ex-SS45 Paullese


**VERIFICA DI ASSOGGETTABILITA' ALLA VALUTAZIONE  
 AMBIENTALE STRATEGICA**

ai sensi della direttiva 2001/42/CE, D.Lgs.n° 152/2006 e s.m.i, Titolo II, art.4  
 L.R. n° 12/2005 s.m.i. e successive delibere regionali

**SOGGETTI PROPONENTI:**

- Chiara Valeriana s.r.l.  
 via Matteotti, 55  
 20068 Peschiera Borromeo (Mi)  
 P.IVA n° 09629080962  
 Legale rappresentante : Geom. Pierfranco Pirovano  
 PEC: chiaravaleriana@legalmail.it
- Chiara Edificatrice Milanese s.r.l.  
 via Matteotti, 55  
 20068 Peschiera Borromeo (Mi)  
 P.IVA n° 03475530154  
 Legale rappresentante : Geom. Pierfranco Pirovano  
 PEC: pirovanocostruzioni@legalmail.it

PESCHIERA BORROMEO



C\_G488-0-1-2017-02-23 - 0006224 A

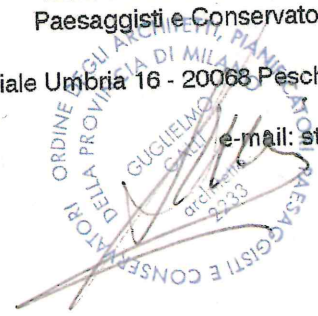
Prot. Generale n: 0006224 Ora: 12.33

Data: 23/02/2017

Classific.: 6-3-0

**PROGETTISTA:**

**Dott. Arch. Guglielmo Galli,**  
 Iscritto all'Ordine degli Architetti, Pianificatori,  
 Paesaggisti e Conservatori della Provincia di  
 Milano n° 2233  
 viale Umbria 16 - 20068 Peschiera Borromeo (mi)  
 tel. 02.70309013  
 e-mail: studioggalli@libero.it

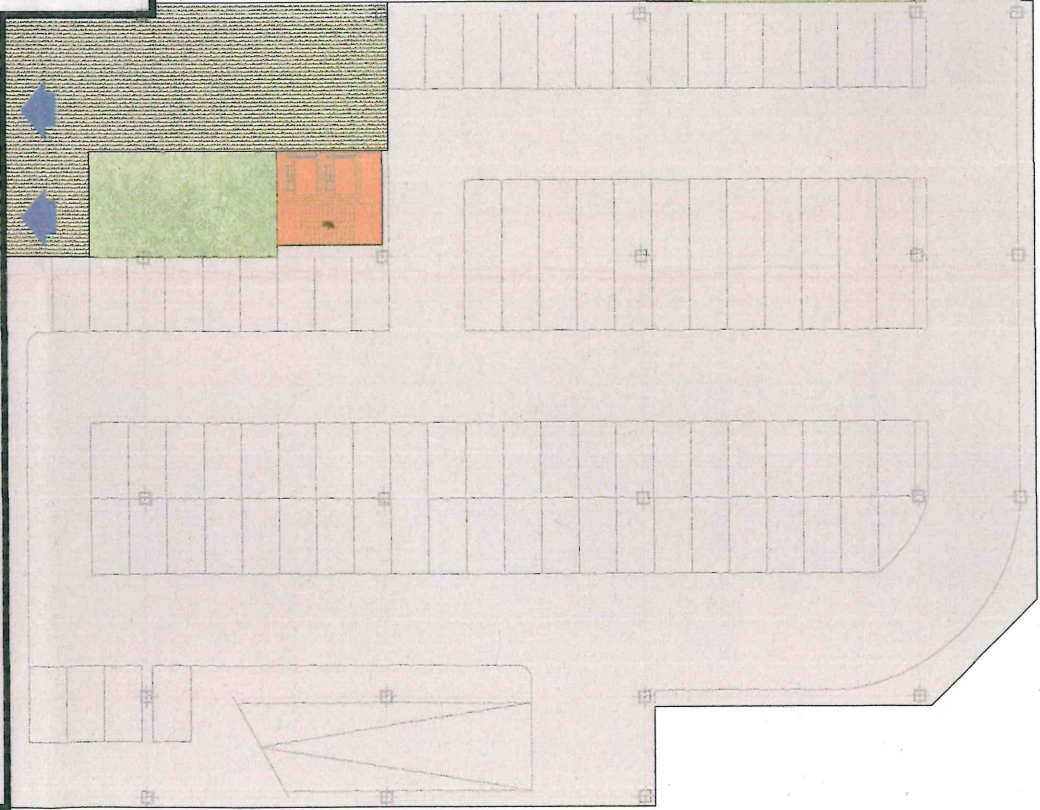
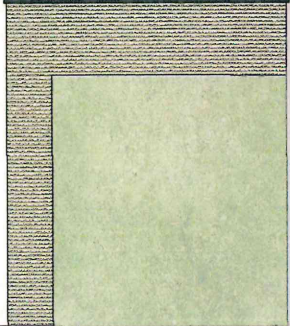


**OGGETTO:**

**SCHEMI FUNZIONALI E DISTRIBUTIVI  
 PIANI SUPERIORI**

Scala : 1:500      Data : Febbraio 2017

Pubblici esercizi  
e/o ristorazione mq = 432

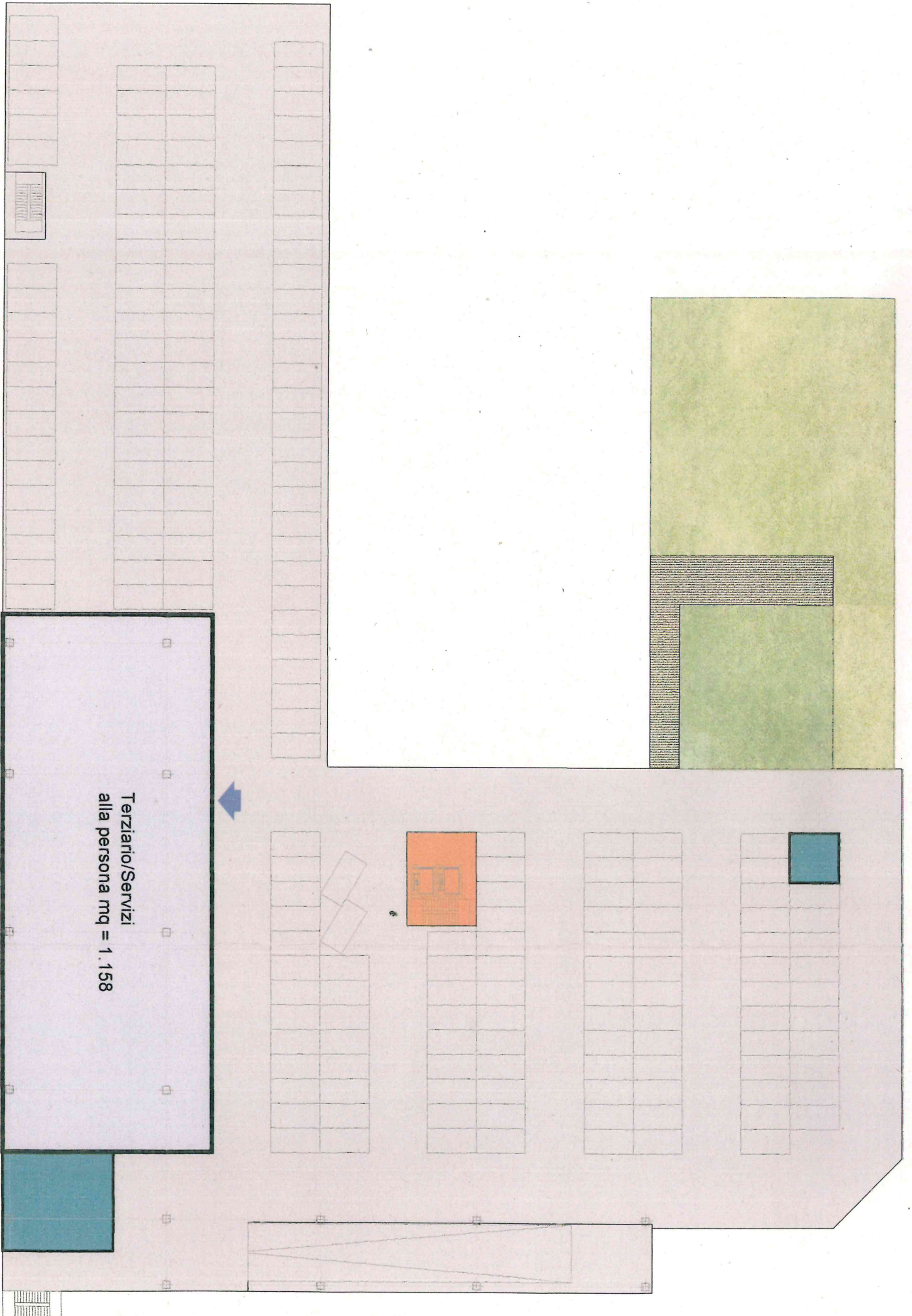


Commerciale mq = 1.610

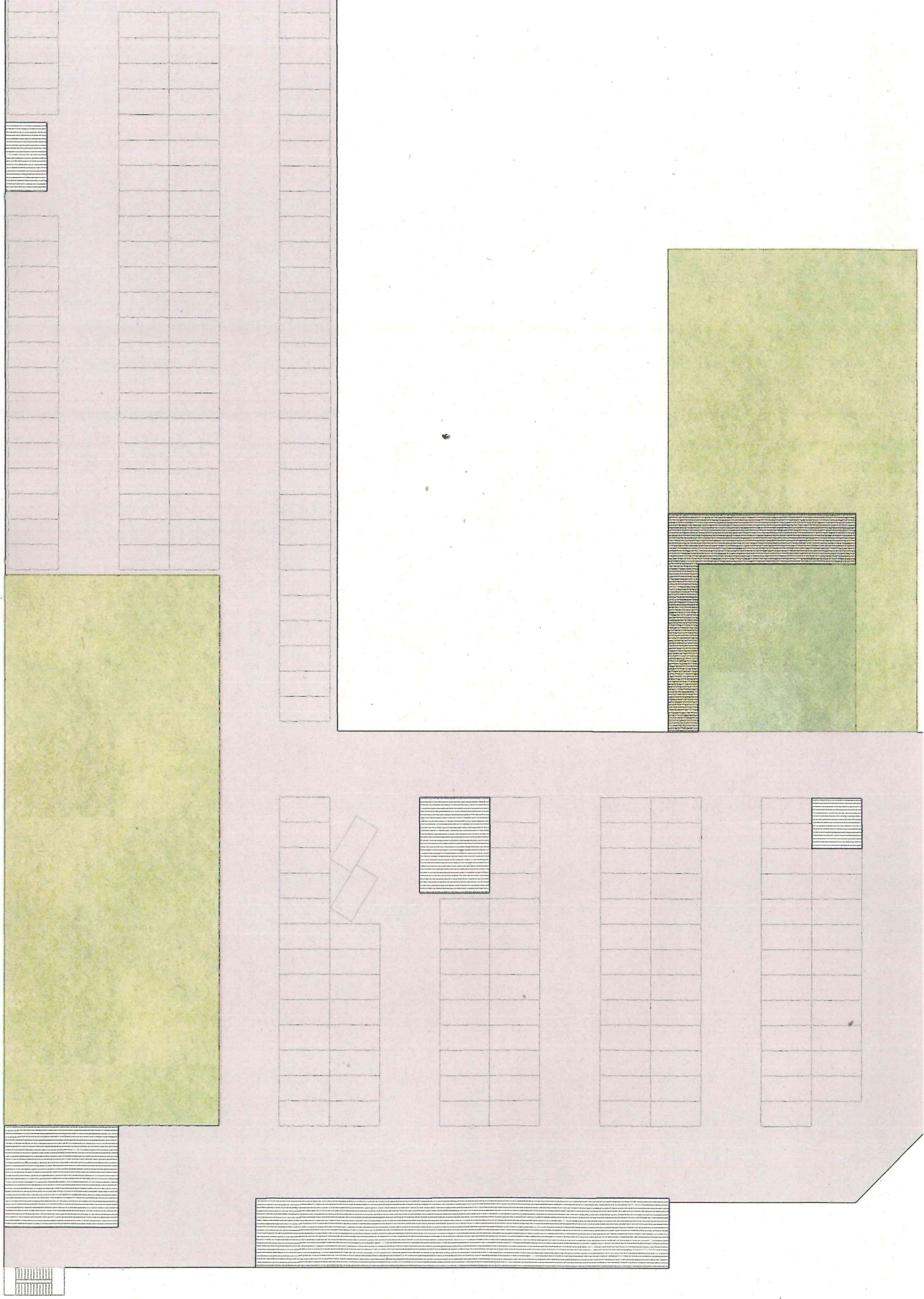
Pubblici esercizi  
e/o ristorazione mq = 1.217

Terziario/Servizi  
alla persona mq = 954

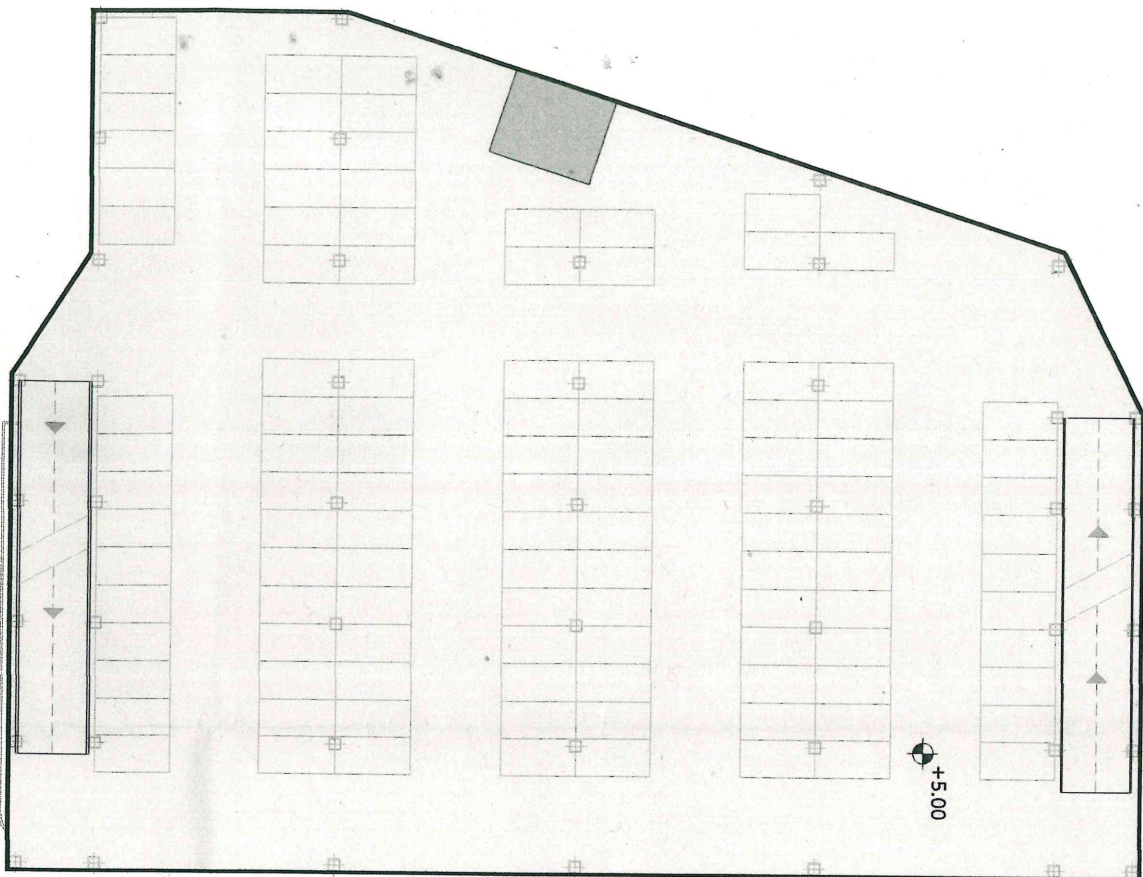




**Terziario/ Servizi  
alla persona mq = 1.158**

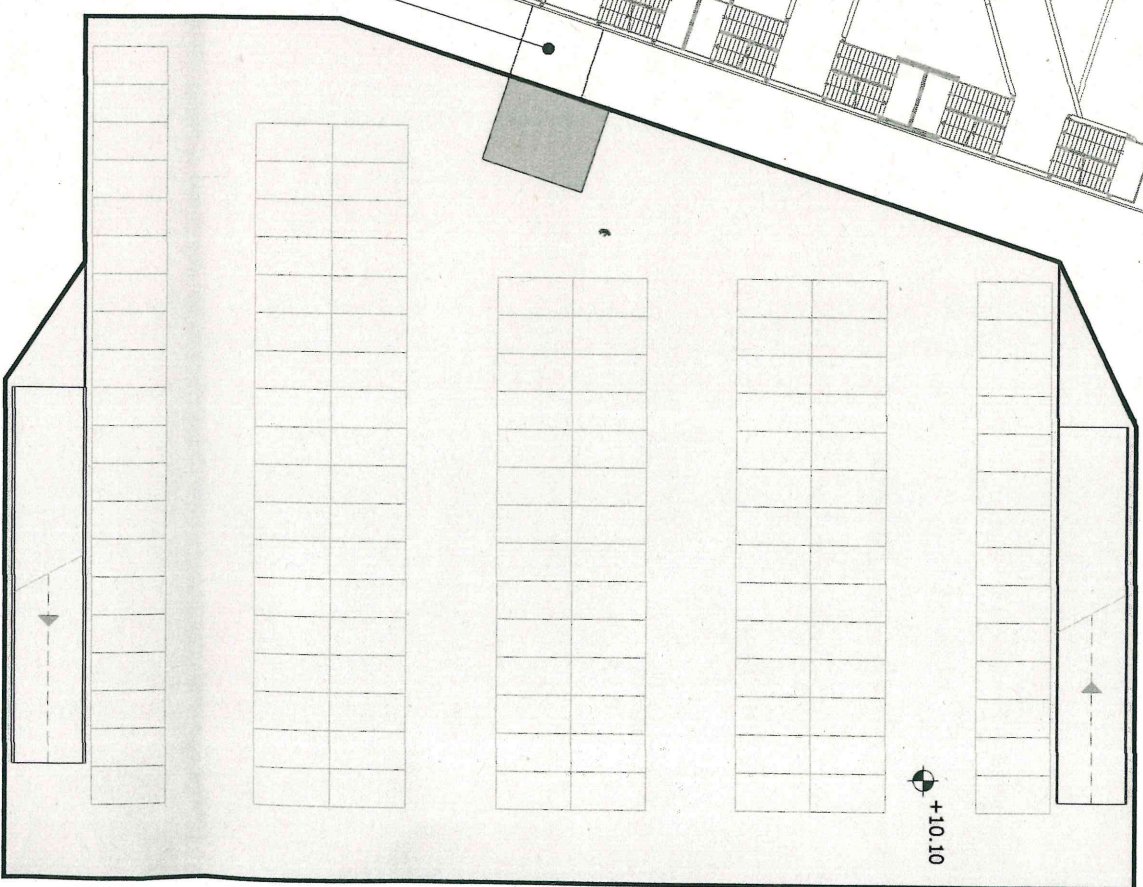
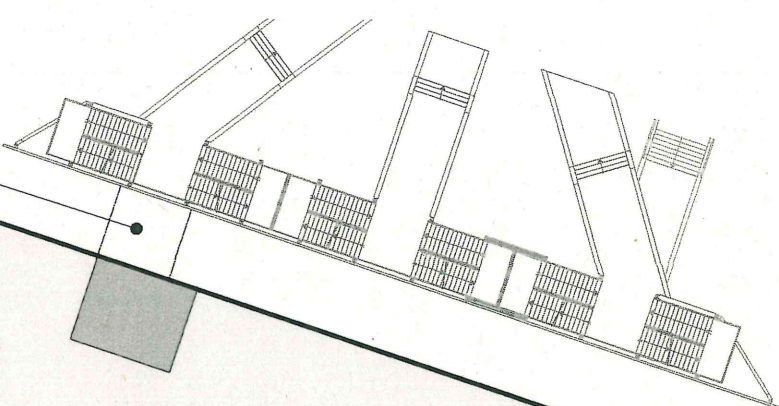


PARCHEGGIO MULTIPIANO - PIANI SUPERIORI



PIANO PRIMO

Collegamento  
con centro commerciale



PIANO SECONDO